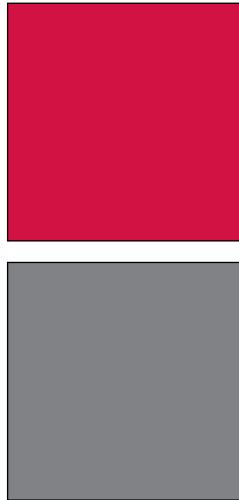
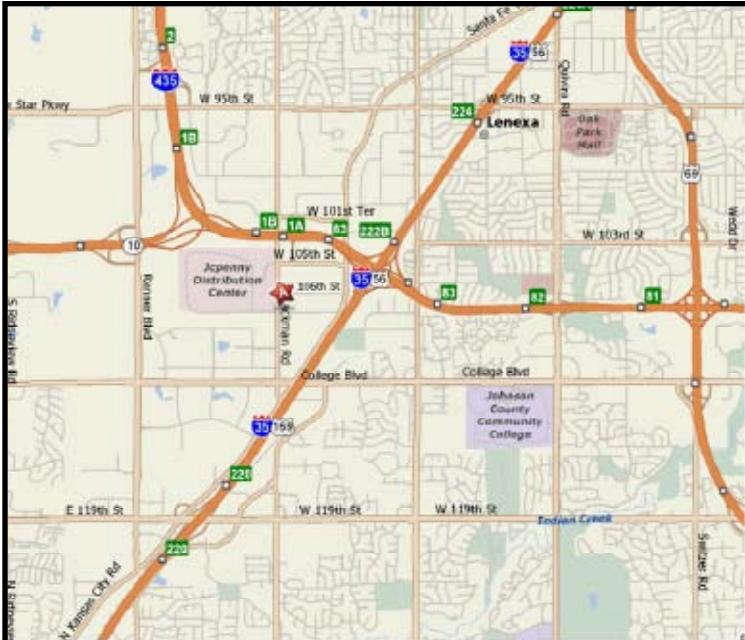


**INDUSTRIAL PROPERTY FOR LEASE**  
**LACKMAN BUSINESS CENTER**  
 10571 Lackman Road  
 Lenexa, Kansas



**Property Highlights**

- 2,660 SF Available
- 1,500 SF Office
- 1,160 SF Warehouse
- \$10.50 PSF Gross Industrial
- Excellent Office/Warehouse, Service Center and Distribution Space
- 14' Clear Height
- 1 Drive-In Door
- Immediate I-435/K-10 Access at 95th Street and Lackman Road
- Convenient Access to I-35, I-635, I-70 and K-10
- Abundant Services Nearby

For more information or to schedule a tour, give us a call.

Kevin Wilkerson  
 913.469.4601 Direct  
 wilkerson@capital-kc.com

Phillip L. Algrim  
 913.469.4605 Direct  
 algrim@capital-kc.com

Erik Lund  
 913.469.4609 Direct  
 lund@capital-kc.com



Commercial Real Estate Services, Worldwide.

7500 College Boulevard • Suite 920 • Overland Park KS 66210

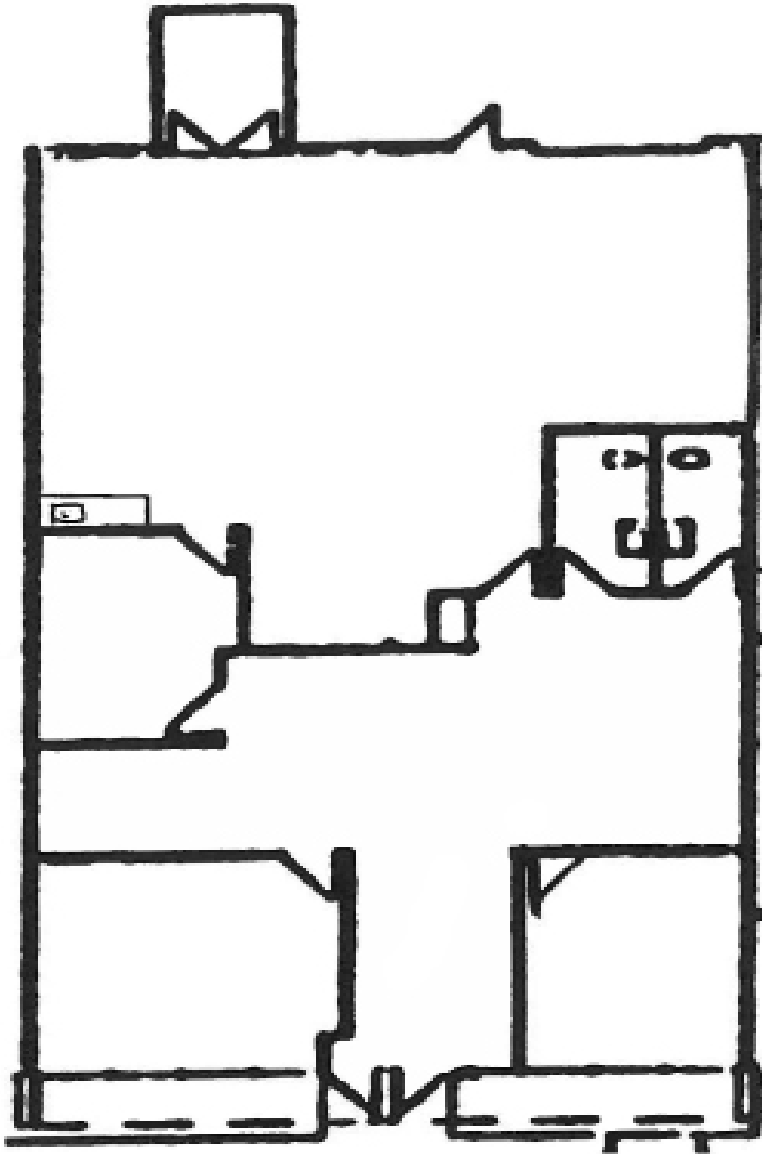
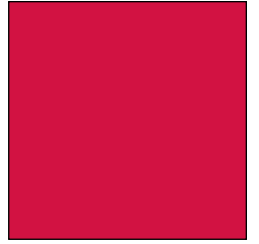
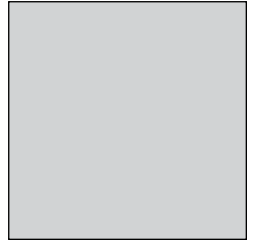
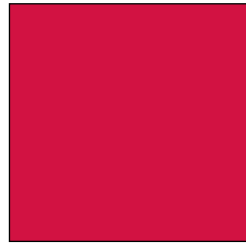
The information contained herein has been given to us by the owner of the property or other sources we deem reliable. We have no reason to doubt its accuracy, but we do not guarantee it. All information should be verified prior to purchase or lease.

[www.capital-kc.com](http://www.capital-kc.com)

# LACKMAN BUSINESS CENTER

10571 Lackman Road

Lenexa, Kansas



**2,660 SF**

For more information or to schedule a tour,  
give us a call.

Kevin Wilkerson  
913.469.4601 Direct  
wilkerson@capital-kc.com

Phillip L. Algrim  
913.469.4605  
algrim@capital-kc.com

Erik Lund  
913.469.4609  
lund@capital-kc.com

# **NAI** Capital Realty

Commercial Real Estate Services, Worldwide.

7500 College Boulevard • Suite 920 • Overland Park KS 66210



**Lackman Business Center  
10571 Lackman Road  
Lenexa, Kansas**

---

**Leasing Information:**

Square Feet:	± 2,660	Lease Rate Per Month:	\$2,327.50
Office Square Feet:	± 1,500	Lease Rate Per Square Foot:	± \$10.50
Warehouse Square Feet:	± 1,160	Lease Type:	Gross

---

**Building Data:**

Private Offices:	3	Clear Height:	14'
Restrooms:	2	Column Spacing:	Varies
Electrical Service:	N/A	Dock-High Doors:	N/A
Warehouse Lighting System:	Fluorescent	Size of Dock-High Doors:	N/A
Warehouse Heating System:	F.A.G.	Drive-In Doors:	1
Sprinkler System:	None	Size of Drive-In Doors:	10' x 10'

---

**Site Data:**

Zoning:	BP-2	Gas:	KPL
Electricity:	KCPL	Sanitary Sewer:	Johnson County
Water:	Johnson County		

---

**For Additional Information Contact:**



7500 College Blvd., Suite 920  
Overland Park, Kansas 66210  
913.469.4600, Fax: 913.469.4650