



**INDUSTRIAL PROPERTY FOR LEASE**  
**EXCHANGE PLACE 1**  
 13414 W. 99th Street  
 Lenexa, Kansas

**2,438 SF Available**

**Property Highlights**

- 2,038 SF office
- 400 SF warehouse
- Excellent Medical Office Space
- 16' Clear Height
- 1 Double Door
- Conveniently located at 99th St. and Pflumm Road
- Interstate Access at 95th St. and I-35
- Immediate access to I-35 and I-435
- Abundant Services Nearby

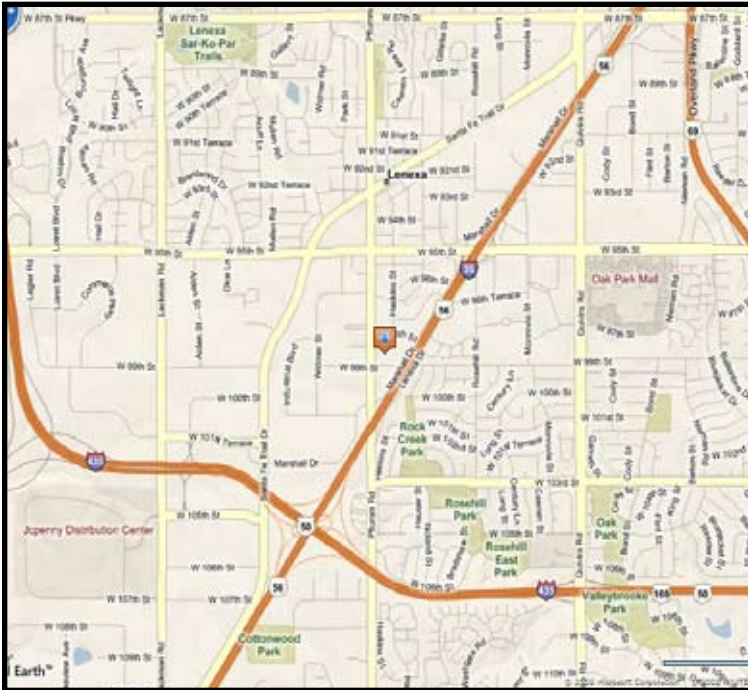
For more information or to schedule a tour, give us a call.

Kevin Wilkerson  
 913.469.4601 Direct  
[wilkerson@capital-kc.com](mailto:wilkerson@capital-kc.com)

Phillip Algrim  
 913.469.4605 Direct  
[algrim@capital-kc.com](mailto:algrim@capital-kc.com)

Erik Lund  
 913.469.4609 Direct  
[lund@capital-kc.com](mailto:lund@capital-kc.com)

[www.capital-kc.com](http://www.capital-kc.com)



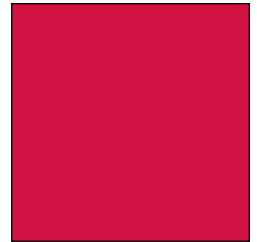
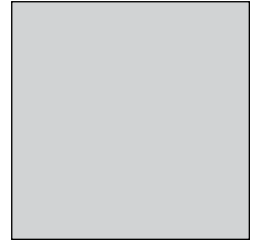
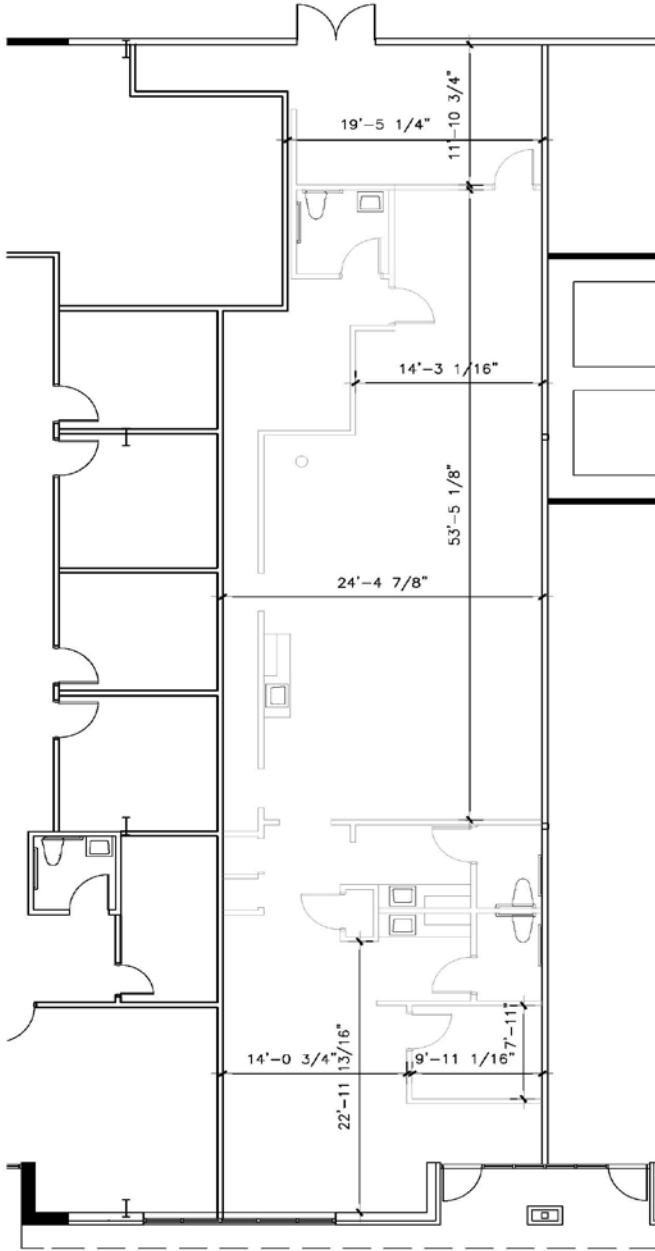
Commercial Real Estate Services, Worldwide.

7500 College Boulevard • Suite 920 • Overland Park KS 66210

The information contained herein has been given to us by the owner of the property or other sources we deem reliable. We have no reason to doubt its accuracy, but we do not guarantee it. All information should be verified prior to purchase or lease.

# EXCHANGE PLACE 1

13414 W. 99th Street  
Lenexa, Kansas



2,438 Square Feet

For more information or to schedule a tour,  
give us a call.

Kevin Wilkerson  
913.469.4601 Direct  
wilkerson@capital-kc.com

Phillip Algrim  
913.469.4605  
algrim@capital-kc.com

Erik Lund  
913.469.4609  
lund@capital-kc.com



Commercial Real Estate Services, Worldwide.

7500 College Boulevard • Suite 920 • Overland Park KS 66210



Commercial Real Estate Services, Worldwide.

**EXCHANGE PLACE 1**  
**13414 W. 99<sup>th</sup> Street**  
**Lenexa, KS**

**Leasing Information:**

Square Feet:	2,438	Lease Rate Per Month:	\$2,031.67
Office/Production Square Feet:	2,038	Lease Rate Per Square Foot:	\$10.00 PSF
Warehouse Square Feet:	400	Lease Type:	Gross Industrial

**Building Data:**

Private Offices:	2 (Exam Rooms)	Clear Height:	16'
Restrooms:	3	Column Spacing:	
Electrical Service:		Dock-High Doors:	N/A
Warehouse Lighting System:	Fluorescent Strip	Size of Dock-High Doors:	N/A
Warehouse Heating System:	G.A.S.	Drive-In Doors:	N/A
Sprinkler System:	Wet	Size of Drive-In Doors:	N/A
		Double Doors:	1

**Site Data:**

Zoning:	BP-1	Gas:	KCPL
Electricity:	KCPL	Sanitary Sewer:	Johnson County
Water:	Johnson County		

**For Additional Information Contact:**

7500 College Blvd., Suite 920  
Overland Park, Kansas 66210  
913.469.4600, Fax: 913469.4650