



**INDUSTRIAL PROPERTY FOR LEASE**  
**EXCHANGE PLACE 2**  
 13415 W. 98th Street  
 Lenexa, Kansas

**14,648 SF Available**

**Property Highlights**

- 10,148 SF office
- 4,500 SF warehouse
- \$10.00 psf gross industrial
- 16' clear height
- 2 Dock-high doors
- Conveniently located at 99th St. and Pflumm Road
- Interstate access at 95th St. and I-35
- Immediate access to I-35 and I-435
- Abundant services nearby

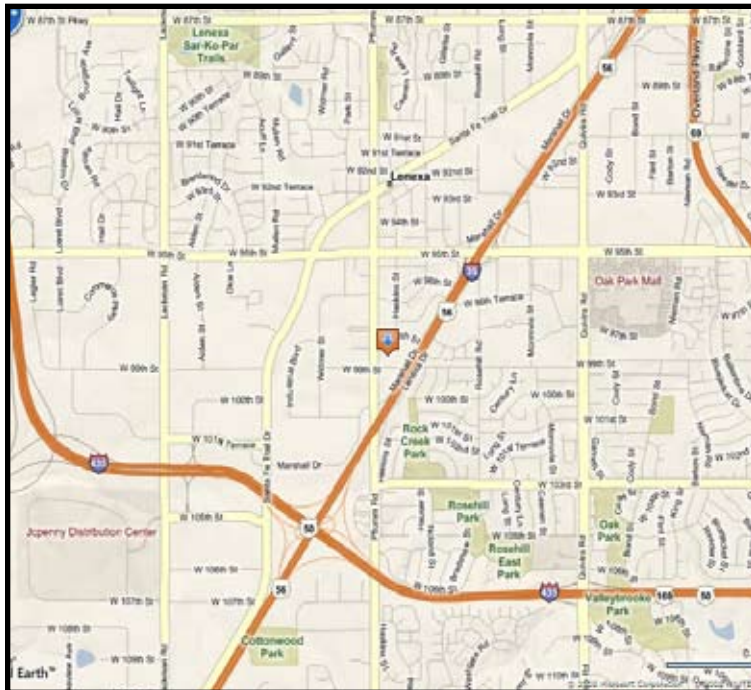
For more information or to schedule a tour, give us a call.

Kevin Wilkerson  
 913.469.4601 Direct  
 wilkerson@capital-kc.com

Phillip Algrim  
 913.469.4605 Direct  
 algrim@capital-kc.com

Erik Lund  
 913.469.4609 Direct  
 lund@capital-kc.com

[www.capital-kc.com](http://www.capital-kc.com)



**NAI Capital Realty**

Commercial Real Estate Services, Worldwide.

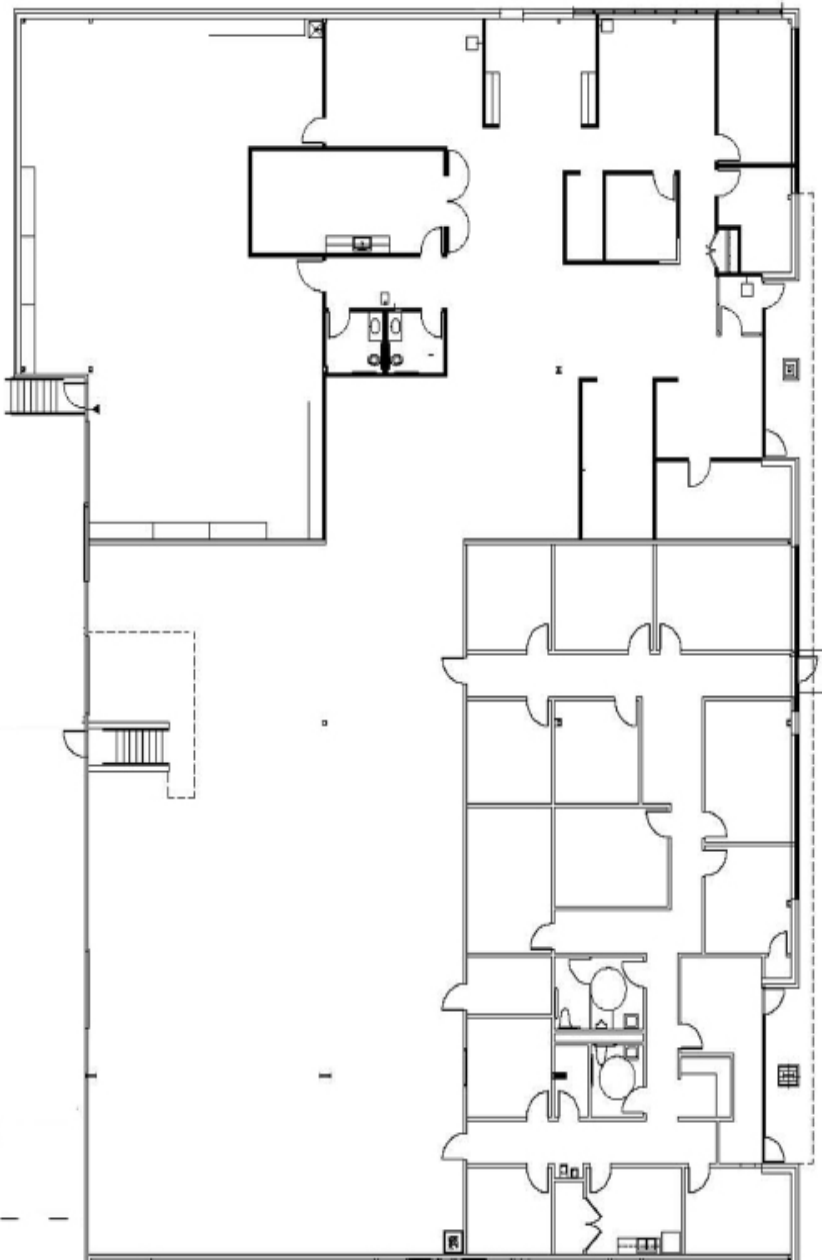
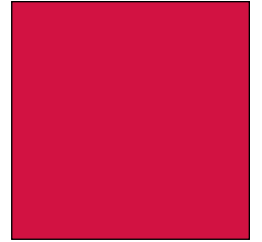
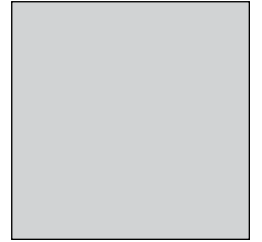
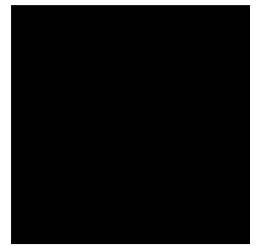
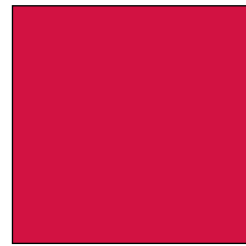
7500 College Boulevard • Suite 920 • Overland Park KS 66210

The information contained herein has been given to us by the owner of the property or other sources we deem reliable. We have no reason to doubt its accuracy, but we do not guarantee it. All information should be verified prior to purchase or lease.

# EXCHANGE PLACE 2

13415 W. 99th Street

Lenexa, Kansas



14,648 Square Feet

For more information or to schedule a tour,  
give us a call.

Kevin Wilkerson  
913.469.4601 Direct  
wilkerson@capital-kc.com

Phillip Algrim  
913.469.4605  
algrim@capital-kc.com

Erik Lund  
913.469.4609  
lund@capital-kc.com

# **NAI** Capital Realty

Commercial Real Estate Services, Worldwide.

7500 College Boulevard • Suite 920 • Overland Park KS 66210



Commercial Real Estate Services, Worldwide.

**EXCHANGE PLACE 2**  
**13415 W. 98<sup>th</sup> Street**  
**Lenexa, KS**

---

**Leasing Information:**

Square Feet:	14,648	Lease Rate Per Month:	\$12,206.67
Office/Production Square Feet:	10,148	Lease Rate Per Square Foot:	\$10.00 PSF
Warehouse Square Feet:	4,500	Lease Type:	Gross Industrial

---

**Building Data:**

Private Offices:	16	Clear Height:	16'
Restrooms:	4	Column Spacing:	
Electrical Service:		Dock-High Doors:	2
Warehouse Lighting System:	Fluorescent Strip	Size of Dock-High Doors:	10' x 10'
Warehouse Heating System:	G.A.S.	Drive-In Doors:	N/A
Sprinkler System:	Wet	Size of Drive-In Doors:	N/A
		Double Doors:	N/A

---

**Site Data:**

Zoning:	BP-1	Gas:	KCPL
Electricity:	KCPL	Sanitary Sewer:	Johnson County
Water:	Johnson County		

---

**For Additional Information Contact:**

7500 College Blvd., Suite 920  
Overland Park, Kansas 66210  
913.469.4600, Fax: 913469.4650

All information furnished concerning property for sale or lease is obtained from sources deemed reliable, but no warranty or representation is made as to the accuracy thereof and the same is submitted subject to errors, omissions, change of price, rental or other conditions, prior to sale or lease, or withdrawal without notice.