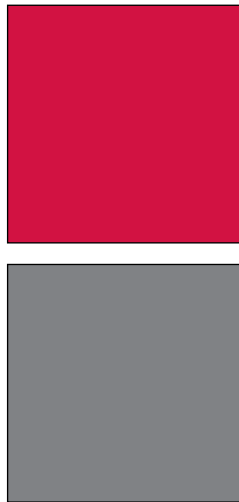
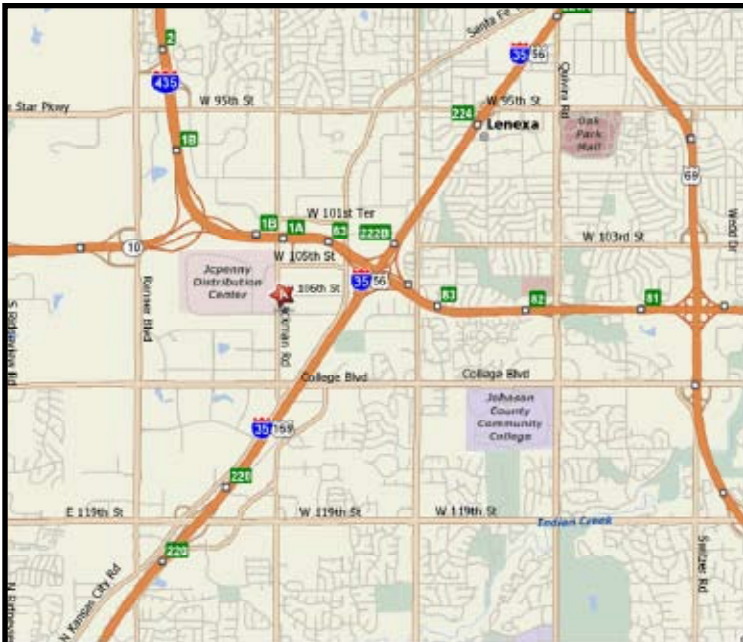


INDUSTRIAL PROPERTY FOR LEASE
LACKMAN BUSINESS CENTER
 15004 West 106th Street
 Lenexa, Kansas



Property Highlights

- 2,059 SF available
- 100% office
- \$10.50 PSF gross industrial
- Excellent office/warehouse, service center and distribution space
- 14' clear height
- 2 double doors
- Immediate I-435/K-10 access at 95th Street and Lackman Road
- Convenient access to I-35, I-635, I-70 and K-10
- Abundant services nearby

For more information or to schedule a tour, give us a call.

Kevin Wilkerson
 913.469.4601 Direct
 wilkerson@capital-kc.com

Phillip L. Algrim
 913.469.4605 Direct
 algrim@capital-kc.com

Erik Lund
 913.469.4609 Direct
 lund@capital-kc.com



Commercial Real Estate Services, Worldwide.

7500 College Boulevard • Suite 920 • Overland Park KS 66210

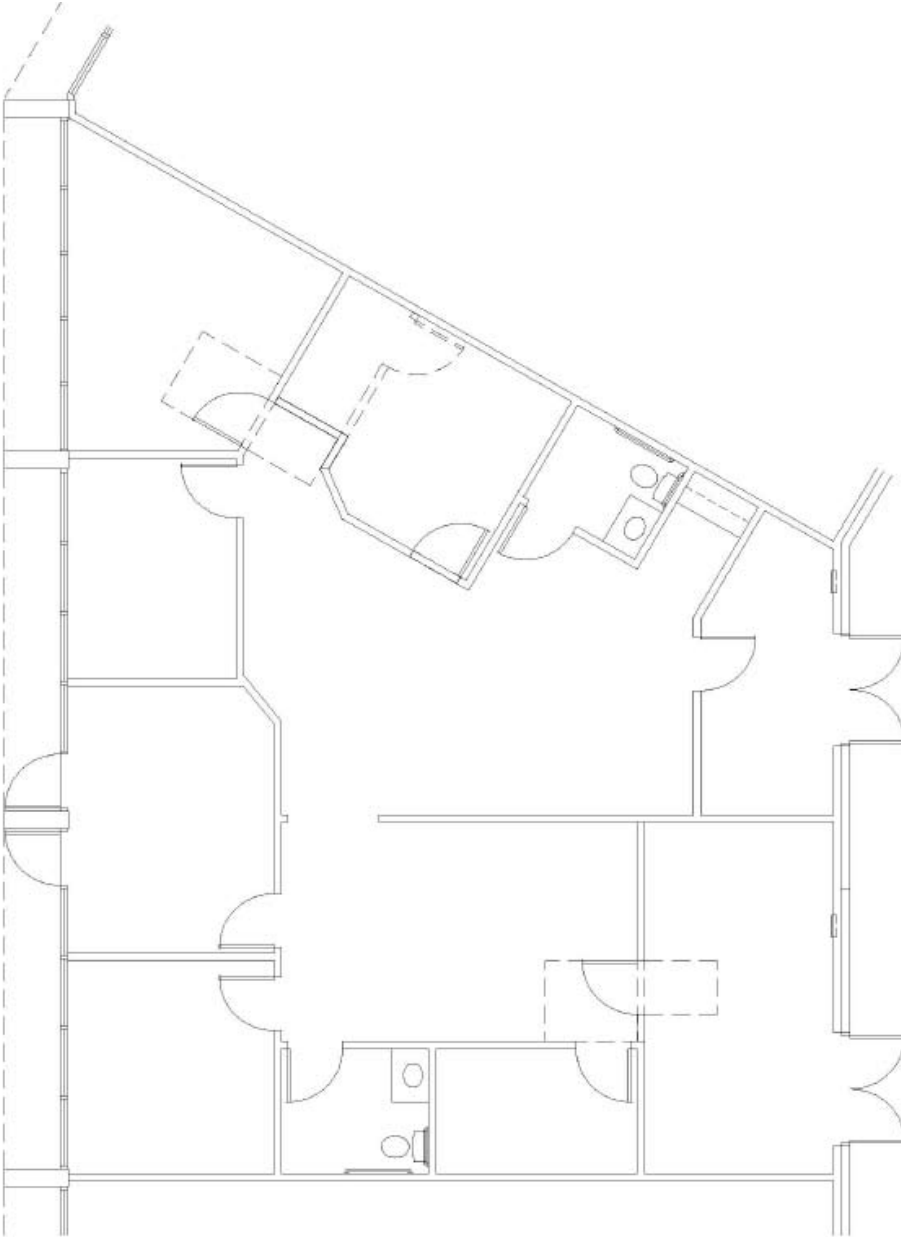
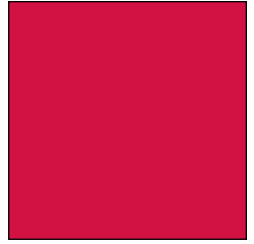
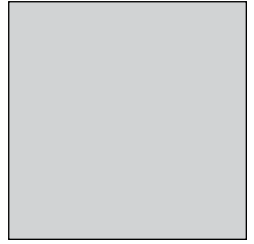
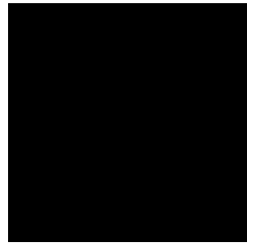
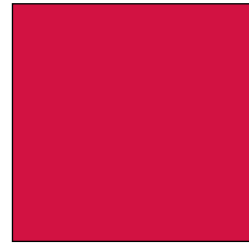
The information contained herein has been given to us by the owner of the property or other sources we deem reliable. We have no reason to doubt its accuracy, but we do not guarantee it. All information should be verified prior to purchase or lease.

www.capital-kc.com

LACKMAN BUSINESS CENTER

15004 West 106th Street

Lenexa, Kansas



2,059 SF

For more information or to schedule a tour,
give us a call.

Kevin Wilkerson
913.469.4601 Direct
wilkerson@capital-kc.com

Phillip L. Algrim
913.469.4605
algrim@capital-kc.com

Erik Lund
913.469.4609
lund@capital-kc.com

NAI Capital Realty

Commercial Real Estate Services, Worldwide.

7500 College Boulevard • Suite 920 • Overland Park KS 66210



**Lackman Business Center
15004 W. 106th Street
Lenexa, Kansas**

Leasing Information:

Square Feet:	± 2,059	Lease Rate Per Month:	\$1,801.00
Office Square Feet:	100%	Lease Rate Per Square Foot:	± \$10.50
Warehouse Square Feet:		Lease Type:	Gross Industrial

Building Data:

Private Offices:	5	Clear Height:	14'
Restrooms:	2	Column Spacing:	Varies
Electrical Service:	N/A	Dock-High Doors:	N/A
Warehouse Lighting System:	Fluorescent	Size of Dock-High Doors:	N/A
Warehouse Heating System:	F.A.G.	Double Doors:	2
Sprinkler System:	None	Size of Double Doors:	-

Site Data:

Zoning:	BP-2	Gas:	KPL
Electricity:	KCPL	Sanitary Sewer:	Johnson County
Water:	Johnson County		

For Additional Information Contact:

NAI Capital Realty
7500 College Blvd., Suite 920
Overland Park, Kansas 66210
913.469.4600, Fax: 913.469.4650