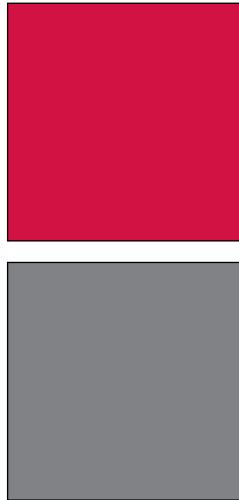
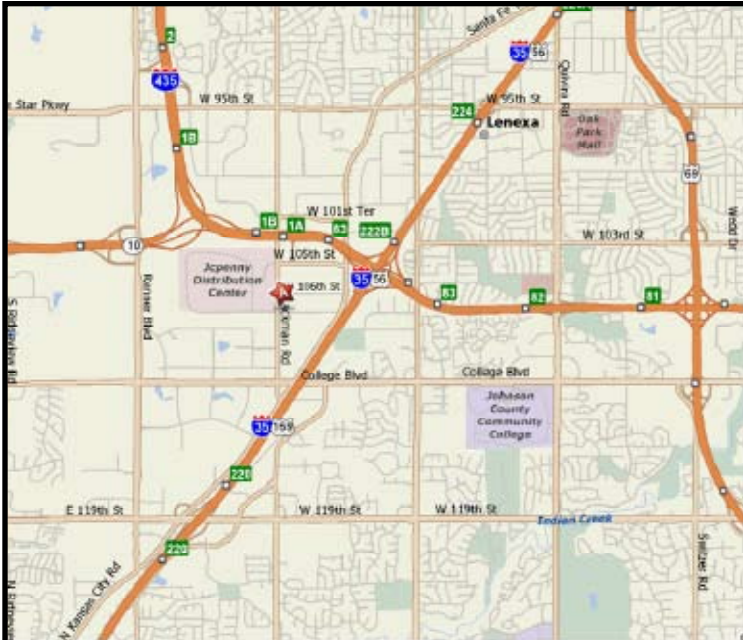


INDUSTRIAL PROPERTY FOR LEASE
LACKMAN BUSINESS CENTER
 15038 West 106th Street
 Lenexa, Kansas



Property Highlights

- 1,400 SF Available
- 800 SF Office Space
- 600 SF Warehouse Space
- \$10.50 PSF Gross Industrial
- Excellent Office/Warehouse, Service Center and Distribution Space
- 14' Clear Height
- 1 Drive-In Door
- Immediate I-435/K-10 Access at 95th Street and Lackman Road
- Convenient Access to I-35, I-635, I-70 and K-10
- Abundant Services Nearby

For more information or to schedule a tour, give us a call.

Kevin Wilkerson
 913.469.4601 Direct
 wilkerson@capital-kc.com

Phillip L. Algrim
 913.469.4605 Direct
 algrim@capital-kc.com

Erik Lund
 913.469.4609 Direct
 lund@capital-kc.com



Commercial Real Estate Services, Worldwide.

7500 College Boulevard • Suite 920 • Overland Park KS 66210

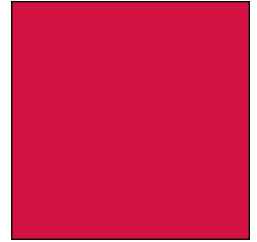
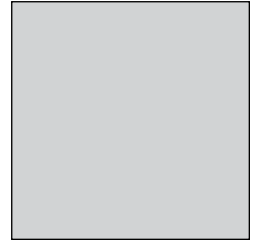
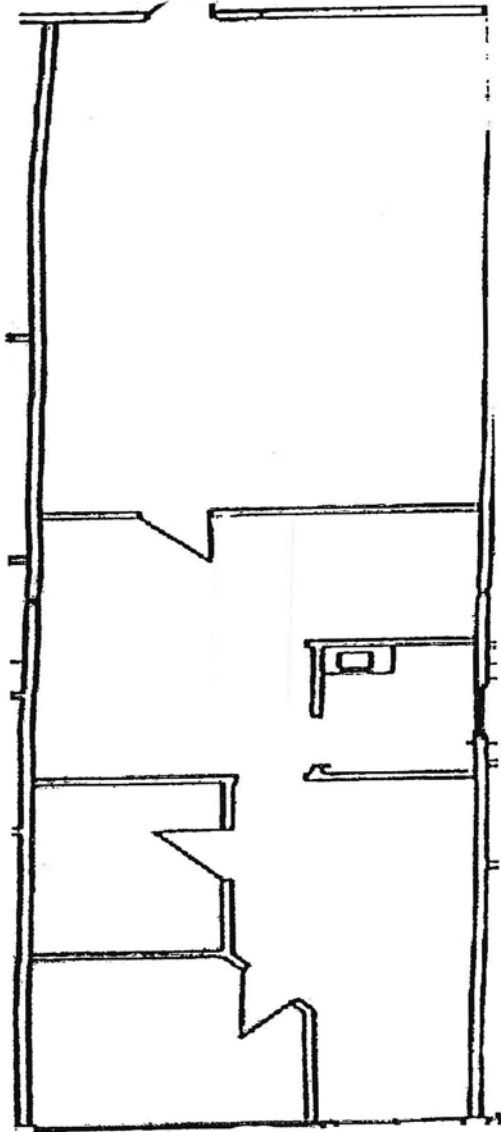
The information contained herein has been given to us by the owner of the property or other sources we deem reliable. We have no reason to doubt its accuracy, but we do not guarantee it. All information should be verified prior to purchase or lease.

www.capital-kc.com

LACKMAN BUSINESS CENTER

15038 West 106th Street

Lenexa, Kansas



1,400 SF

For more information or to schedule a tour,
give us a call.

Kevin Wilkerson
913.469.4601 Direct
wilkerson@capital-kc.com

Phillip L. Algrim
913.469.4605
algrim@capital-kc.com

Erik Lund
913.469.4609
lund@capital-kc.com

NAI Capital Realty

Commercial Real Estate Services, Worldwide.

7500 College Boulevard • Suite 920 • Overland Park KS 66210



**Lackman Business Center
15038 W. 106th Street
Lenexa, Kansas**

Leasing Information:

Square Feet:	± 1,400	Lease Rate Per Month:	\$1,225.00
Office Square Feet:	± 800	Lease Rate Per Square Foot:	± \$10.50
Warehouse Square Feet:	± 600	Lease Type:	Gross Industrial

Building Data:

Private Offices:	2	Clear Height:	14'
Restrooms:	1	Column Spacing:	Varies
Electrical Service:	N/A	Dock-High Doors:	N/A
Warehouse Lighting System:	Fluorescent	Size of Dock-High Doors:	N/A
Warehouse Heating System:	F.A.G.	Drive-In Doors:	1
Sprinkler System:	None	Size of Drive-In Doors:	10' x 10'

Site Data:

Zoning:	BP-2	Gas:	KPL
Electricity:	KCPL	Sanitary Sewer:	Johnson County
Water:	Johnson County		

For Additional Information Contact:

NAI Capital Realty

7500 College Blvd., Suite 920
Overland Park, Kansas 66210
913.469.4600, Fax: 913.469.4650

All information furnished concerning property for sale or lease is obtained from sources deemed reliable, but no warranty or representation is made as to the accuracy thereof and the same is submitted subject to errors, omissions, change of price, rental or other conditions, prior to sale or lease, or withdrawal without notice.