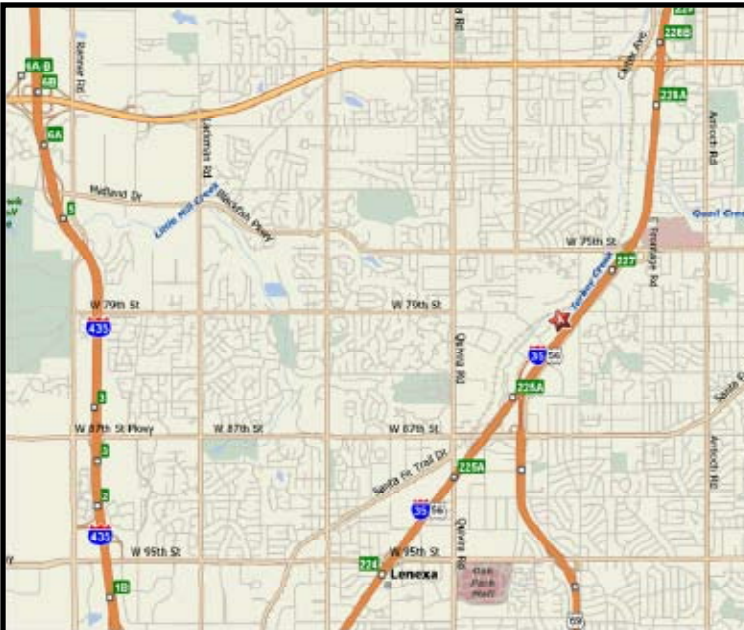


INDUSTRIAL PROPERTY FOR LEASE
WESTBROOK II
8024 Reeder
Lenexa, Kansas



Property Highlights

- 3,465 SF available
- 100% office
- \$10.50 PSF gross industrial
- Excellent office opportunity
- Excellent I-35 highway access at 75th & 87th Streets
- Convenient access to I-435 and 69 Highway at 87th Street
- Abundant services nearby

For more information or to schedule a tour, give us a call.

Kevin Wilkerson
913.469.4601 Direct
wilkerson@capital-kc.com

Phillip L. Algrim
913.469.4605 Direct
algrim@capital-kc.com

Erik Lund
913.469.4609 Direct
lund@capital-kc.com

NAI Capital Realty

Commercial Real Estate Services, Worldwide.

7500 College Boulevard • Suite 920 • Overland Park KS 66210

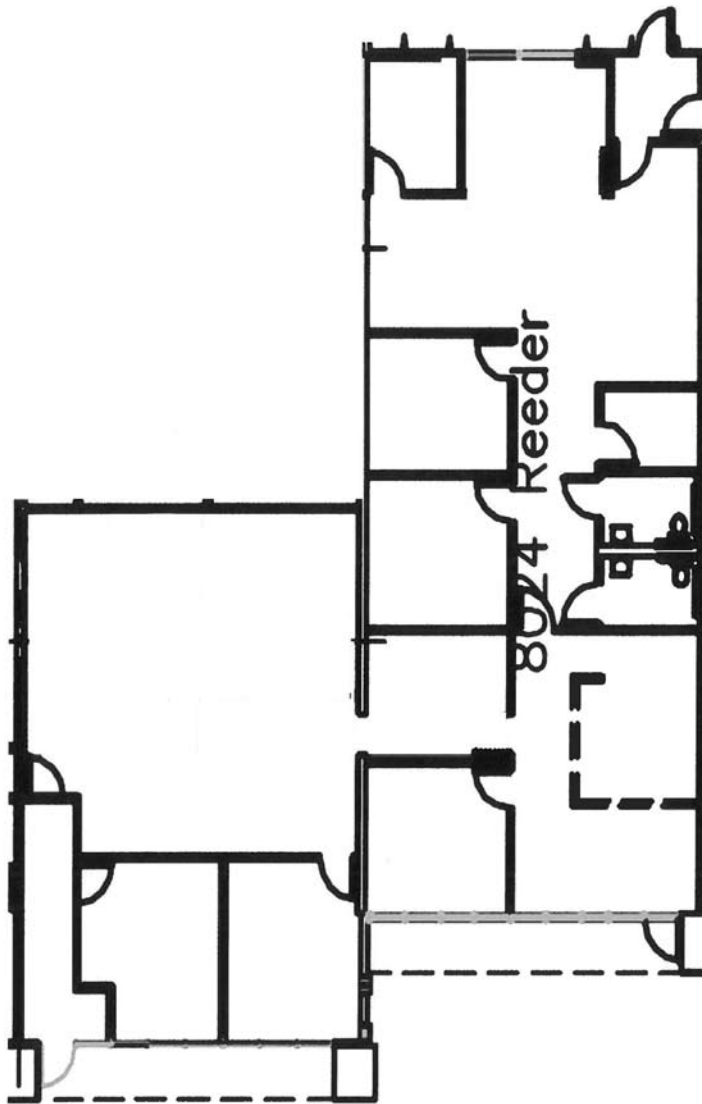
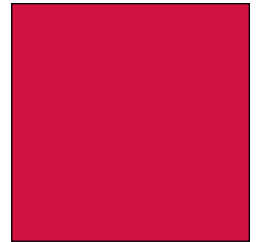
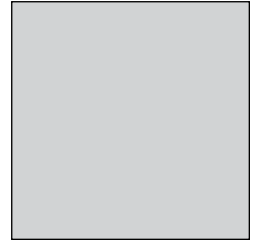
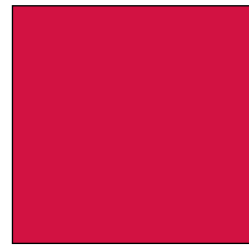
The information contained herein has been given to us by the owner of the property or other sources we deem reliable. We have no reason to doubt its accuracy, but we do not guarantee it. All information should be verified prior to purchase or lease.

www.capital-kc.com

WESTBROOK II

8024 Reeder

Lenexa, Kansas



3,465 SF

For more information or to schedule a tour,
give us a call.

Kevin Wilkerson
913.469.4601 Direct
wilkerson@capital-kc.com

Phillip L. Algrim
913.469.4605
algrim@capital-kc.com

Erik Lund
913.469.4609
lund@capital-kc.com

NAI Capital Realty

Commercial Real Estate Services, Worldwide.

7500 College Boulevard • Suite 920 • Overland Park KS 66210