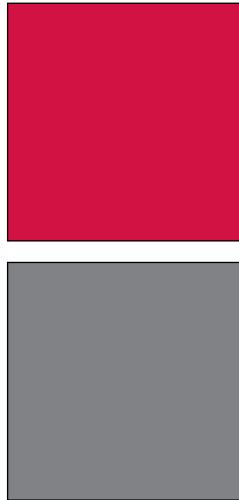


INDUSTRIAL PROPERTY FOR LEASE
PFLUMM BUSINESS CENTER
 Building 1 - 9850 Pflumm Road
 Lenexa, Kansas



Property Highlights

- Up to 2,000 SF Available
- 584 SF Office
- 1,416 SF Warehouse
- \$8.50 PSF Gross Industrial
- 12' Clear Height
- Excellent Office/Warehouse and Service Center Space
- 1 Drive-In Door
- Conveniently located at 98th Street and Pflumm Road
- Interstate Access at 95th Street and I-35
- Immediate Access to I-435 and I-35
- Abundant Services Nearby

For more information or to schedule a tour, give us a call.

Kevin Wilkerson
 913.469.4601 Direct
 wilkerson@capital-kc.com

Phillip L. Algrim
 913.469.4605
 algrim@capital-kc.com

Erik Lund
 913.469.4609
 lund@capital-kc.com

NAI Capital Realty

Commercial Real Estate Services, Worldwide.

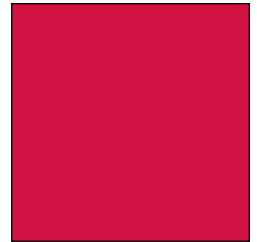
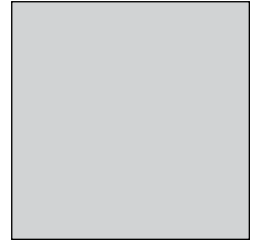
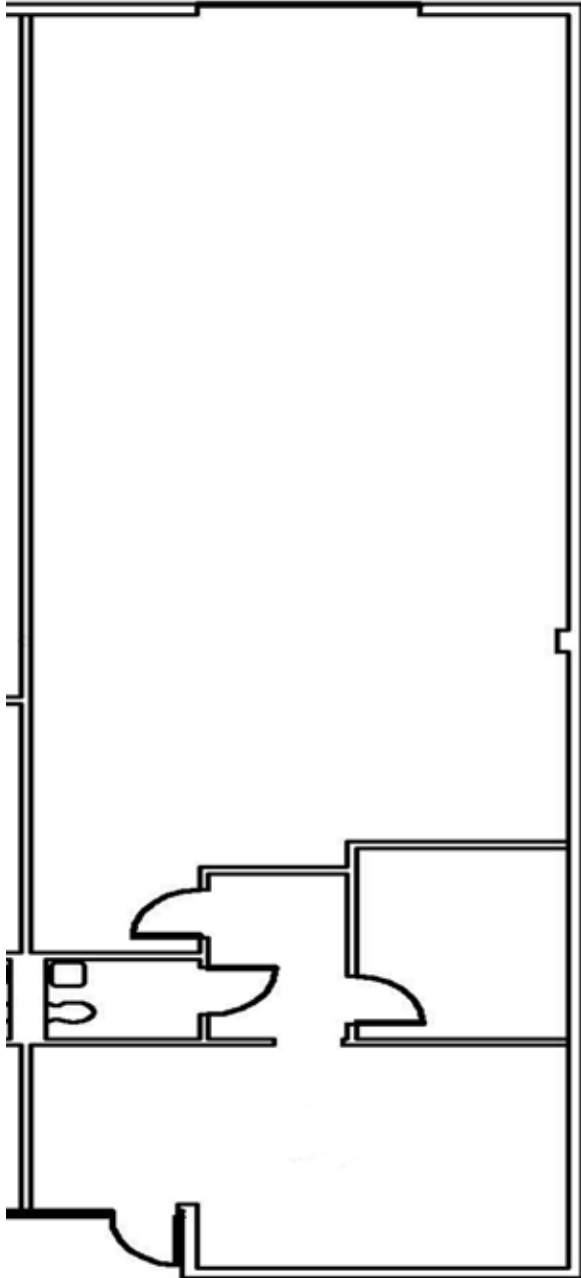
7500 College Boulevard • Suite 920 • Overland Park KS 66210

The information contained herein has been given to us by the owner of the property or other sources we deem reliable. We have no reason to doubt its accuracy, but we do not guarantee it. All information should be verified prior to purchase or lease.

www.capital-kc.com

PFLUMM BUSINESS CENTER

Building 1 - 9850 Pflumm Road
Lenexa, Kansas



Building 1
2,000 SF

For more information or to schedule a tour,
give us a call.

Kevin Wilkerson
913.469.4601 Direct
wilkerson@capital-kc.com

Phillip L. Algrim
913.469.4605
algrim@capital-kc.com

Erik Lund
913.469.4609
lund@capital-kc.com

NAI Capital Realty

Commercial Real Estate Services, Worldwide.

7500 College Boulevard • Suite 920 • Overland Park KS 66210



**Pflumm Business Center
9850 Pflumm**

Leasing Information:

Square Feet:	± 2,000	Lease Rate Per Month:	\$1,416.67
Office Square Feet:	± 584	Lease Rate Per Square Foot:	± \$8.50
Warehouse Square Feet:	± 1,416	Lease Type:	Gross

Building Data:

Private Offices:	2	Clear Height:	12'
Restrooms:	1	Column Spacing:	None
Electrical Service:	N/A	Dock-High Doors:	0
Warehouse Lighting System:	Fluorescent Strip	Size of Dock-High Doors:	
Warehouse Heating System:	F.A.G.	Drive-In Doors:	1
Sprinkler System:	None	Size of Drive-In Doors:	10' x 10'

Site Data:

Zoning:	BP-2	Gas:	KPL
Electricity:	KCPL	Sanitary Sewer:	Johnson County
Water:	Johnson County		

For Additional Information Contact:

NAI Capital Realty

7500 College Blvd., Suite 920
Overland Park, Kansas 66210
913.469.4600, Fax: 913469.4650