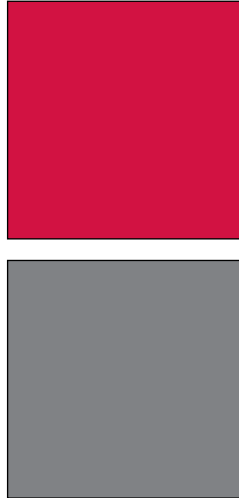
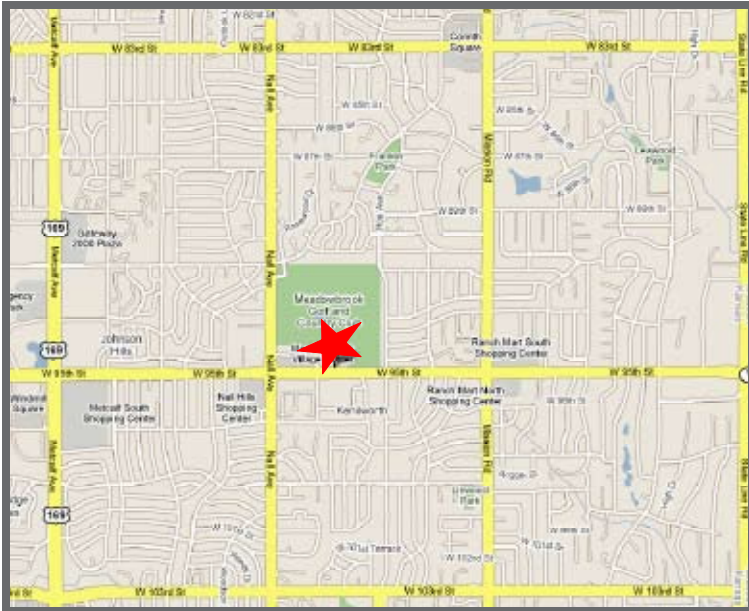


OFFICE BUILDING FOR SALE OR LEASE

GREENVIEW PLACE

5000 West 95th Street, Prairie Village, Kansas



Property Highlights

- Office or medical space available
- Easily accessible from 95th Street
- Numerous nearby amenities
- Views of Meadowbrook Golf Course
- Heavily treed and landscaped setting
- Space available from 926 to 12,033 square feet

For more information or to schedule a tour, give us a call.



Commercial Real Estate Services, Worldwide.

7500 College Boulevard • Suite 920 • Overland Park KS 66210

Jeff Kembel
913.469.4604 Direct
kembel@capital-kc.com

Matt Kiehne
913.469.4624 Direct
kiehne@capital-kc.com

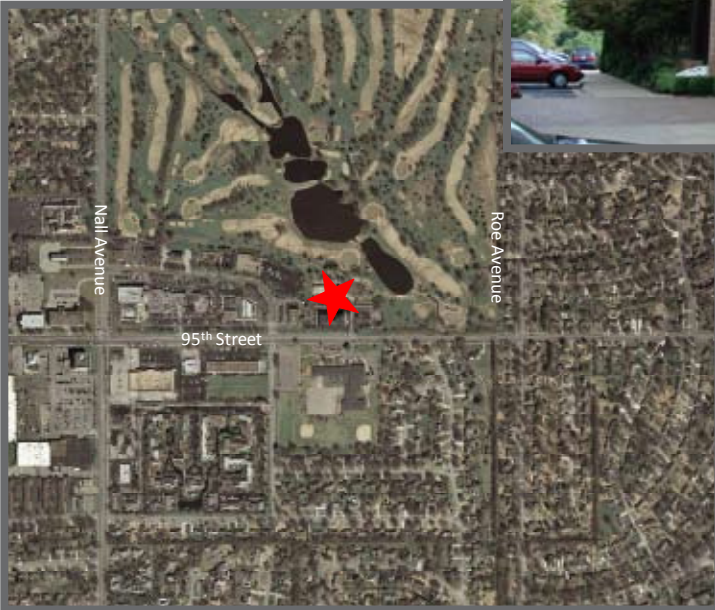
www.capital-kc.com

The information contained herein has been given to us by the owner of the property or other sources we deem reliable. We have no reason to doubt its accuracy, but we do not guarantee it. All information should be verified prior to purchase or lease.

OFFICE BUILDING FOR SALE OR LEASE

GREENVIEW PLACE

5000 West 95th Street, Prairie Village, Kansas



NAI Capital Realty

Commercial Real Estate Services, Worldwide.

7500 College Boulevard • Suite 920 • Overland Park KS 66210

For more information or to schedule a tour,
give us a call.

Jeff Kembel
913.469.4604 Direct
kembel@capital-kc.com

Matt Kiehne
913.469.4624 Direct
kiehne@capital-kc.com

www.capital-kc.com